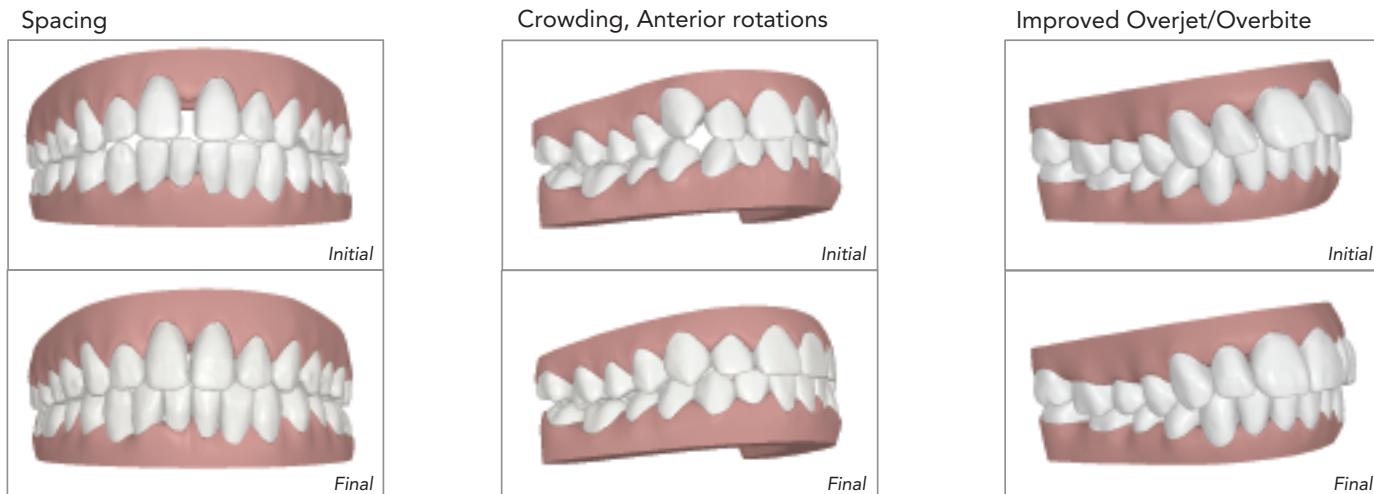


2. SELECTING CASES FOR INVISALIGN ASSIST®

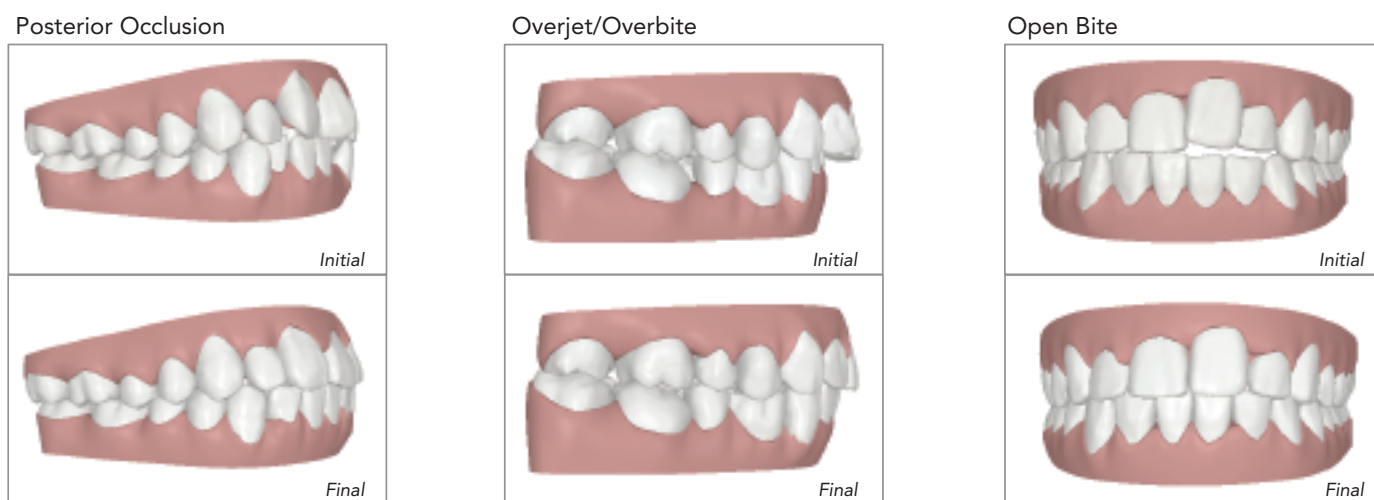
INVISALIGN ASSIST MAY HELP YOU ACHIEVE YOUR TREATMENT GOALS

Anterior alignment and posterior corrections, required to support anterior alignment, can be achieved with Invisalign Assist. Examples of treatment plans using Invisalign Assist are provided below.



INVISALIGN ASSIST CAN ALSO BE USED TO TREAT AND ADDRESS PATIENT'S CHIEF CONCERNS

Anterior alignment improvements can be made with Invisalign Assist, though a complete correction may not be shown. Examples of limited treatment outcomes - using Invisalign Assist - are provided below.



Actual patient outcomes may vary based on a number of factors such as physiology, patient compliance, and others.