

5. PVS IMPRESSIONS – ONE-STEP TECHNIQUE

TIPS & TRICKS

- Wear vinyl, nitrile, or powder free latex gloves
- Use Invisalign impression trays only
- Use PVS for impressions, not other materials
- Use a timer to monitor setting time
- iTero™ digital impressions will be accepted starting Fall 2011

MATERIALS NEEDED

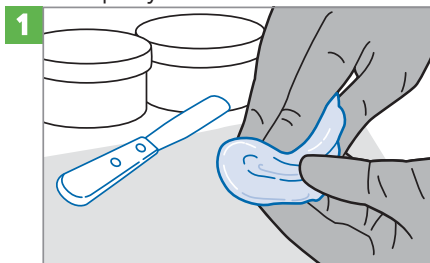
- Putty
- Light-body wash PVS
- Invisalign impression trays

Technique Note:

To get the best results, doctors should use the impression technique with which they are most comfortable. Many doctors find the One-Step technique is a simple and reliable method for capturing full arch impressions.

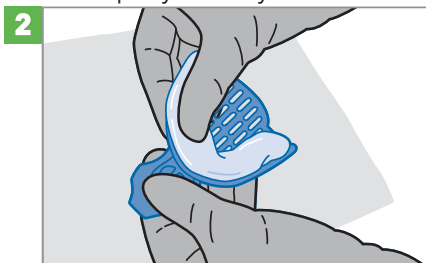
PROCEDURE

Mix putty



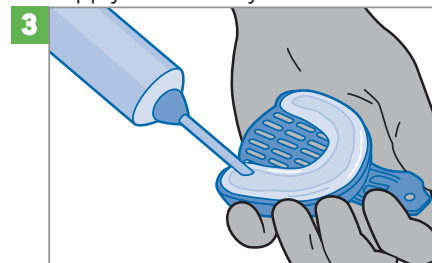
- Use equal amounts of putty and mix
- Putty is ready when uniform in color, without swirls

Load putty into tray



- Roll material into hot dog shape and load into tray
- Press putty against tray, locking into the perforations

Apply wash to tray



- Place tip of light wash against putty, release material into tray
- Firmly press tip into the light wash material to prevent bubbles

Insert tray



- Insert tray straight and evenly into mouth, center the tab to patient's nose
- Using a timer, follow recommended setting time in mouth
- Remove impression tray from mouth

Repeat & disinfect



- Repeat procedure for opposing arch
- Disinfect impressions before shipping